

TYPHOON INTAKE SYSTEMS



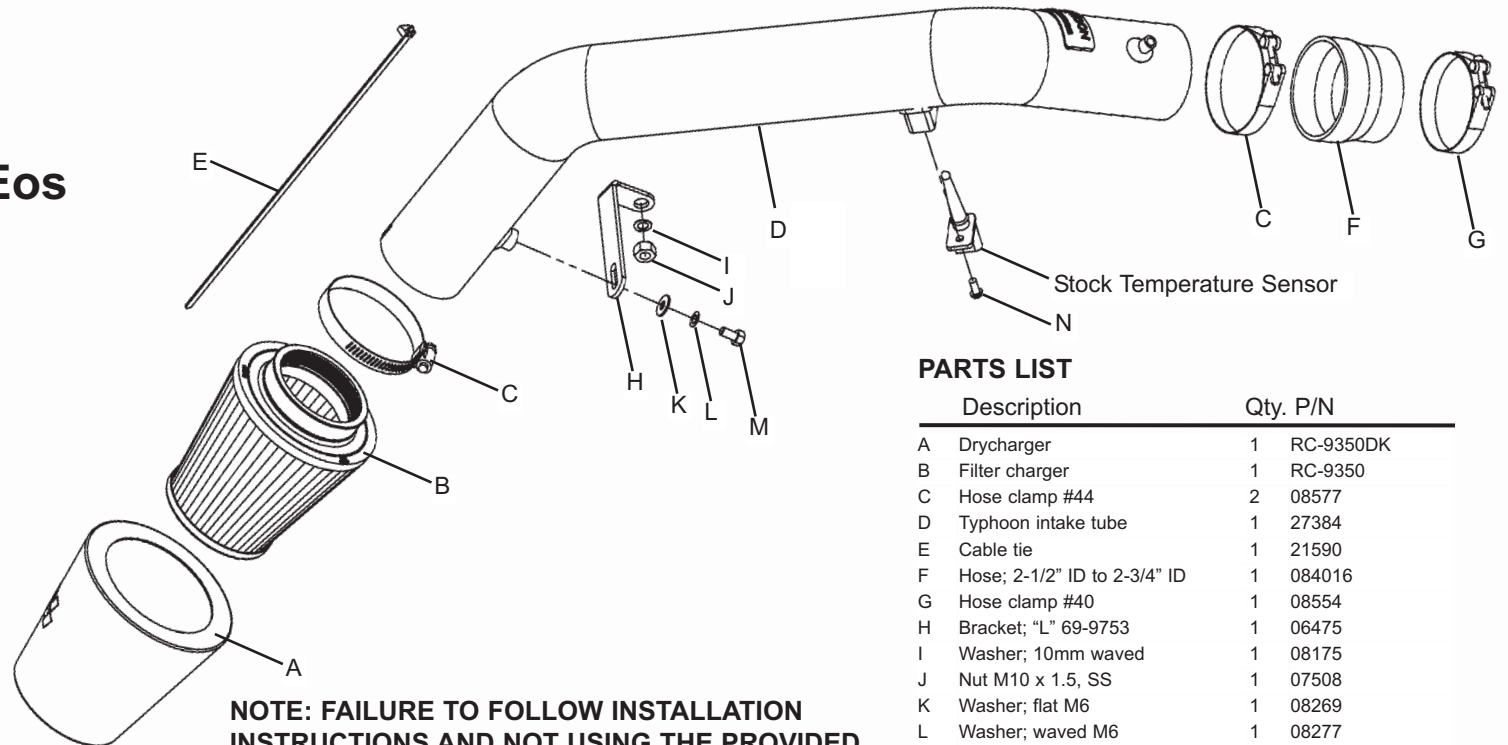
INSTALLATION INSTRUCTIONS

69-9754

Volkswagen
Golf V / Jetta II / Eos
2004-2007
2.0L 16v FSi 150bhp

Tools Needed:

10 mm ring spanner
Torx 20 screwdriver
pliers
Phillips head screwdriver
Car Jack
13 mm Socket wrench & Extension
Pair of axle stands
Ratchet



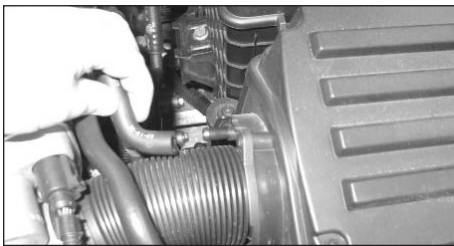
PARTS LIST

Description	Qty.	P/N
A Drycharger	1	RC-9350DK
B Filter charger	1	RC-9350
C Hose clamp #44	2	08577
D Typhoon intake tube	1	27384
E Cable tie	1	21590
F Hose; 2-1/2" ID to 2-3/4" ID	1	084016
G Hose clamp #40	1	08554
H Bracket; "L" 69-9753	1	06475
I Washer; 10mm waved	1	08175
J Nut M10 x 1.5, SS	1	07508
K Washer; flat M6	1	08269
L Washer; waved M6	1	08277
M Bolt; M6 x 12mm	1	07727
N Bolt; M5 x 12mm buttonhead	1	07734

TO START:

1. Turn the ignition OFF and disconnect the vehicle's negative battery terminal.

NOTE: FAILURE TO FOLLOW INSTALLATION INSTRUCTIONS AND NOT USING THE PROVIDED HARDWARE MAY DAMAGE THE INTAKE TUBE, THROTTLE BODY AND ENGINE.



2. Remove the breather hose from the air box as shown.



7. Taking all the necessary safety precautions lift the front of the vehicle upwards and support it with jack stands as shown.



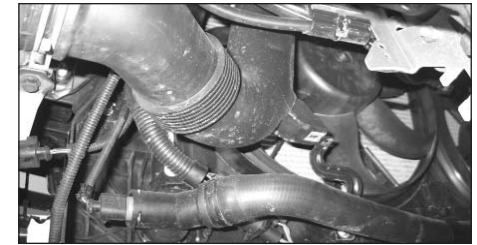
12. Remove the complete resonator box from the vehicle as shown.



3. Unclip the wire loom from the side of the air box as shown.



8. From underneath the car remove the left wheel arch liner as shown.



13. Unscrew the intake snorkel hose from the support bracket as shown.



4. Remove the intake hose from the throttle body using a pair of pliers as shown.



9. From underneath the car remove the under-tray as shown.



14. Unclip the intake snorkel hose from the intake snorkel as shown.



5. Unclip the temperature sensor electrical connector as shown.



10. Unclip the intake snorkel hose from the resonator box using the pliers as shown.



15. Remove the temperature sensor from the air box as shown.



6. Remove the complete air box from the vehicle by pulling the air box upwards.

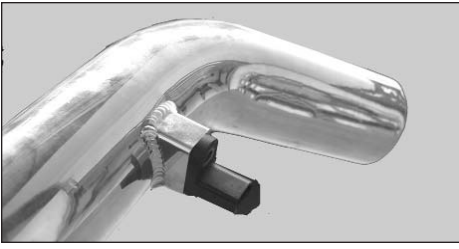


11. Remove the three bolts securing the resonator box to the vehicle.



16. Clean the inside of the new intake tube with water and a towel.

Continued on reverse side!



17. Mount the temperature sensor into the new intake tube using the M5 bolt supplied.



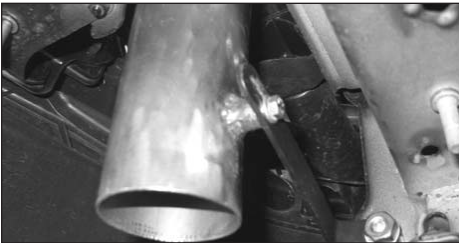
18. Fit the silicone sleeve onto the throttle body using the #40 hose clamp supplied.



19. Fit the new intake tube into the silicone sleeve using the #44 hose clamp supplied. Do not fully tighten at this moment.



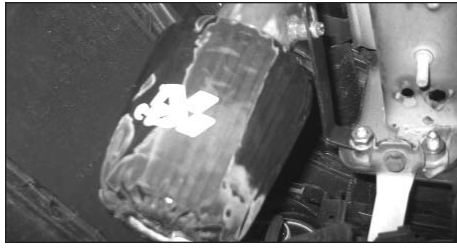
20. Mount the "L" bracket onto the thread of the front beam using the M10 washer and M10 nut supplied. Do not fully tighten at this moment.



21. Fit the new intake tube onto the "L" bracket using the M6 washer, M6 waved washer and M6 bolt supplied. Do not fully tighten at this moment.



22. Fit the K&N Drycharger over the K&N Filter as shown. **NOTE:** The Drycharger's water repellent properties will last up to 2 years. See parts list to re-order Drycharger if necessary.



23. Fit the filter onto the new intake tube using the #44 hose clamp supplied.



24. Align the new intake tube for best fit and clearance, then, firmly tighten the hose clamp and M6 and M10 nut.



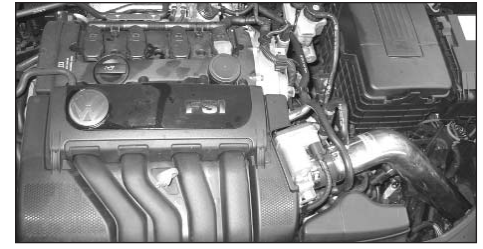
25. Reconnect the temperature sensor electrical connector and fit the wireloom of the temperature sensor onto the large wireloom.



26. Fit the breather hose onto the new intake tube as shown.



27. Refit the undertray and the wheel arch liner back onto the car.



28. Refit the negative battery terminal. Installation is now complete.

29. Double check to make sure everything is tight and properly positioned before starting the vehicle.

30. It will be necessary for all Typhoons to be checked periodically for realignment, clearance and tightening of all connections. Failure to follow the above instructions or proper maintenance may void warranty.



ROAD TESTING:

1. Start the engine with the transmission in neutral or park, and the parking brake engaged. Listen for air leaks or odd noises. For air leaks secure hoses and connections. For odd noises, find cause and repair before proceeding. This kit will function identically to the factory system except for being louder and much more responsive.

2. Test drive the vehicle. Listen for odd noises or rattles and fix as necessary.

3. If road test is fine, you can now enjoy the added power and performance from your kit.

4. K&N suggests checking the Filtercharger element periodically for excessive dirt build-up. When the element becomes covered in dirt (or once a year), service it according to the instructions on the Recharger service kit available from your K&N dealer, part number 99-5003eu.