



TYPHOON INTAKE SYSTEMS

NOT LEGAL FOR SALE OR USE ON ANY POLLUTION CONTROLLED MOTOR VEHICLE IN CALIFORNIA OR STATES ADOPTING CALIFORNIA EMISSION PROCEDURES.

See knfilters.com for CARB status on each part for a specific vehicle

INSTALLATION INSTRUCTIONS

69-5316TS

KIA

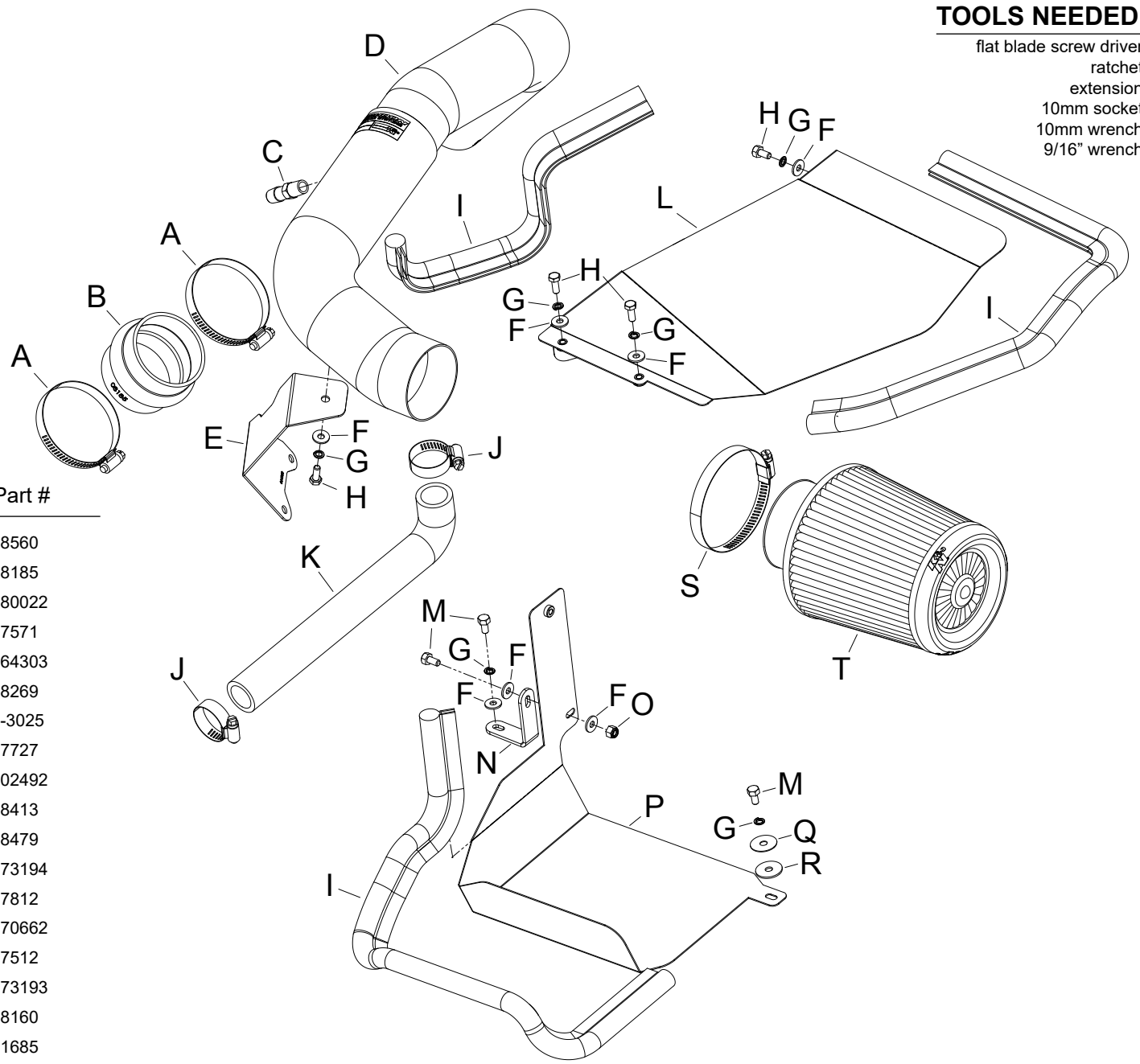
2014-17 Forte 5

2014-16 Forte Koup

L4-1.6L Turbo

TOOLS NEEDED:

- flat blade screw driver
- ratchet
- extension
- 10mm socket
- 10mm wrench
- 9/16" wrench



PARTS LIST:

Description	Qty.	Part #
A HOSE CLAMP #44 STAINLESS	2	08560
B HOSE; 2-3/4" ID X 2-1/2" L	1	08185
C VENT; STRT 1/2" HOSE, 1/4"	1	080022
D INTAKE TUBE	1	27571
E BRACKET; 69-5312, STL, TB/PC	1	064303
F WASHER; 6MM FLAT, SS	7	08269
G WASHER, M6 SPLIT LOCK ZINC	6	1-3025
H BOLT; M6 X 1.00 X 12MM, SS	4	07727
I EDGE TRIM (61")	1	102492
J HOSE CLAMP #16	2	08413
K HOSE; 1" ID X 11" L W/ 1" L	1	08479
L HEAT SHIELD TOP	1	073194
M BOLT; 6MM-1.00 X 16MM, SS	3	07812
N BRACKET; 57-1509, "L", FIN	1	070662
O NUT; 6MM NYLOCK, HEXHEAD	1	07512
P HEAT SHIELD	1	073193
Q WASHER; 1"D X 1/4 HOLE	1	08160
R WASHER; 1" X .300 X .100	1	21685
S HOSE CLAMP #48	1	08601
T AIR FILTER	1	RX-4730XD

If you need any assistance please call 1-800-858-3333 to speak with a representative in our Customer Service Center before returning the product.

NOTE: FAILURE TO FOLLOW INSTALLATION INSTRUCTIONS AND NOT USING THE PROVIDED HARDWARE MAY DAMAGE THE INTAKE TUBE, THROTTLE BODY AND ENGINE.

TO START:

1. Turn off the ignition and disconnect the negative battery cable.
NOTE: Disconnecting the negative battery cable erases pre-programmed electronic memories. Write down all memory settings before disconnecting the negative battery cable. Some radios will require an anti-theft code to be entered after the battery is reconnected. The anti-theft code is typically supplied with your owner's manual. In the event your vehicles anti-theft code cannot be recovered, contact an authorized dealership to obtain your vehicles anti-theft code.



2. Lift up and remove the decorative engine cover from the vehicle.



3. Release the spring clamps securing the crank case vent and BOV hose to the intake hose and disconnect the hoses from the intake hose.



4. Loosen the clamp securing the intake tube to the turbo inlet pipe.



5. Release the two upper air filter housing retaining clips then lift up and remove the upper air filter housing and intake tube assembly.



6. Release the two retaining clips securing the fresh air duct and then remove the three bolts securing the lower air filter housing and remove the lower air filter housing assembly.

NOTE: K&N Engineering, Inc., recommends that customers do not discard factory air intake.



7. Release the spring clamp and then remove the BOV hose from BOV.



8. Remove the two bolts that secure the inner fresh air duct to the core support and then remove the inner fresh air duct.

NOTE: The two bolts are hidden from view under the top lip of the core support.



9. Remove the cover from the hose clamp screw on the throttle body charge hose.

NOTE: The cap is pressed on and can be pried off with a small screw driver.



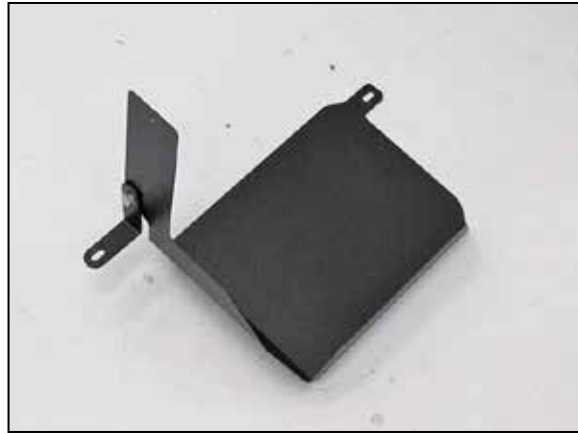
10. Loosen the hose clamp securing the intake charge tube and then remove it from the throttle body. Loosen and remove the two upper throttle body bolts shown.



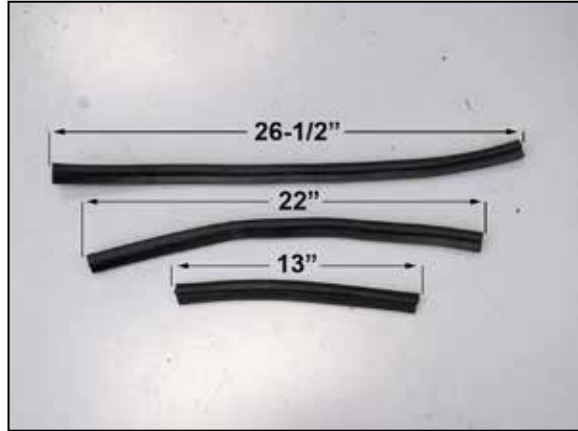
11. Install the provided tube mounting bracket using the factory throttle body bolts removed in the previous step. Reinstall the intake charge hose and secure with the factory hose clamp.



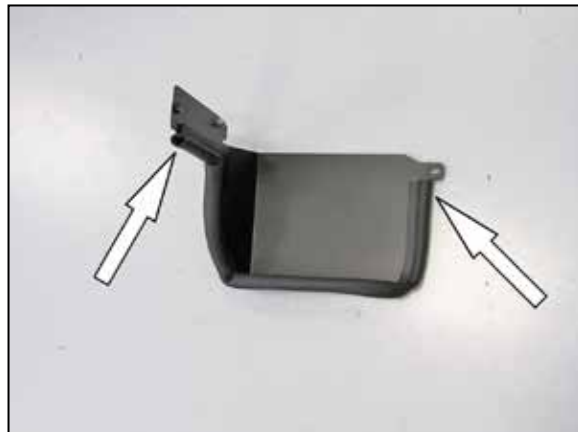
12. Install the provided coupling hose (08185) onto the turbo inlet tube and secure with the provided hose clamp.



13. Install the provided heat shield mounting bracket (070662) onto the heat shield as shown using the provided hardware.



14. Cut the provided edge trim into three sections, one section will be 26-1/2" long, one section will be 22" long and the shortest section will be 13" long.



15. Install the 26-1/2" long edge trim onto heat shield #073193 as shown.



16. Install the heat shield onto the air filter housing mounting locations and secure with the provided hardware.



17. Install the provided vent fitting into the K&N® intake tube as shown.

NOTE: Plastic NPT fittings are easy to cross thread. Install the vent fitting "hand" tight, then turn it two complete turns with a wrench.



18. Install the provided BOV hose onto the BOV valve but do not tighten the hose clamp at this time.



19. Install the K&N® intake tube into the coupler at the turbo inlet tube and align with the mounting bracket previously installed. Secure the tube with the hardware and hose clamp provided.



20. Connect the BOV hose to the K&N® intake tube and secure with the provided hose clamp.



21. Connect the crank case vent hose to the K&N® intake tube and secure with the factory hose clamp.



22. Install the K&N® air filter and secure with the provided hose clamp.



23. Install the remaining edge trim onto the heat shield as shown.



24. Install the heat shield and secure it to the heat shield and core support using the provided hardware.



25. Reinstall the decorative engine cover.



26. Reconnect the vehicle's negative battery cable. Double check to make sure everything is tight and properly positioned before starting the vehicle.

27. It will be necessary for all K&N® high flow intake systems to be checked periodically for realignment, clearance and tightening of all connections. Failure to follow the above instructions or proper maintenance may void warranty.

ROAD TESTING:

1. Start the engine with the transmission in neutral or park, and the parking brake engaged. Listen for air leaks or odd noises. For air leaks secure hoses and connections. For odd noises, find cause and repair before proceeding. This kit will function identically to the factory system except for being louder and much more responsive.

2. Test drive the vehicle. Listen for odd noises or rattles and fix as necessary.

3. If road test is fine, you can now enjoy the added power and performance from your kit.

4. K&N Engineering, Inc., requires cleaning the intake system's air filter element every 100,000 miles. When used in dusty or off-road environments, our filters will require cleaning more often. We recommend that you visually inspect your filter once every 25,000 miles to determine if the screen is still visible. When the screen is no longer visible some place on the filter element, it is time to clean it. To clean and re-oil, purchase our filter Recharger® service kit, part number 99-5050 or 99-5000 and follow the easy instructions.

NOT LEGAL FOR SALE OR USE ON ANY POLLUTION CONTROLLED MOTOR VEHICLE IN CALIFORNIA OR STATES ADOPTING CALIFORNIA EMISSION PROCEDURES.

See knfilters.com for CARB status on each part for a specific vehicle