

Warning: The K&N Drycharger included in this kit must be installed on the K&N air filter when used with a K&N Typhoon Cold Air Intake System. The K&N Typhoon Intake System is a performance product that can be used safely during mild weather conditions. During hard and inclement weather conditions, you must convert your Cold Air Intake System into a short ram configuration, or return your vehicle to the stock OEM airbox and intake tract configuration. Failure to follow these instructions can void your warranty.

INSTALLATION INSTRUCTIONS

69-4002

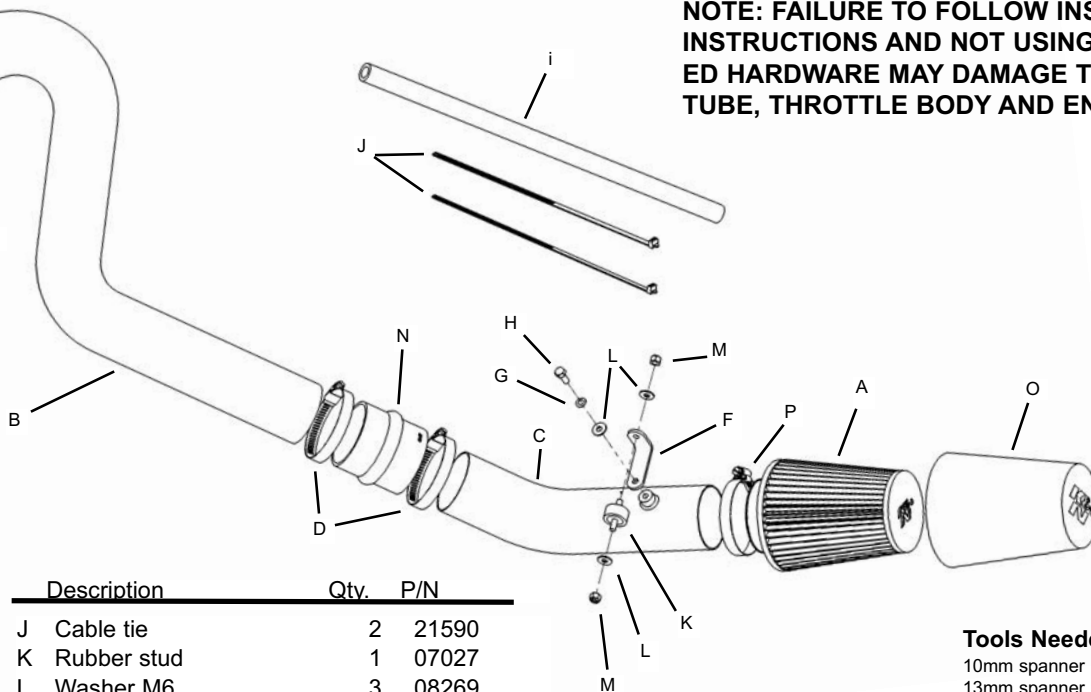
Ford Fiesta ST

2005-2007

2.0L 16v 150bhp

PARTS LIST

Description	Qty.	P/N
A Filter Charger	1	RC-9310
B Typhoon Intake Tube "A"	1	27407
C Typhoon Intake Tube "B"	1	27408
D Hose Clamp; #44	4	08560
E Hose, 2-3/4"IDx2" L, Black	1	08440
F Bracket, "L", 57-2503	1	07078
G Washer, 6mm wave	1	08277
H Bolt; M6 x 16mm, SS	1	07703
I Breather hose	1	084075



Description	Qty.	P/N
J Cable tie	2	21590
K Rubber stud	1	07027
L Washer M6	3	08269
M Nut M6, Nylock	2	07512
N Silicone hump hose	1	08439
O Dry-charger	1	RC-9310DK
P Hose clamp #44	1	08577

NOTE: FAILURE TO FOLLOW INSTALLATION INSTRUCTIONS AND NOT USING THE PROVIDED HARDWARE MAY DAMAGE THE INTAKE TUBE, THROTTLE BODY AND ENGINE.

Tools Needed:

10mm spanner
13mm spanner
Side cutting pliers
Flat blade screwdriver
Torx T30 screwdriver
Lifting Jack
Pair Of Axle Stands

TO START:

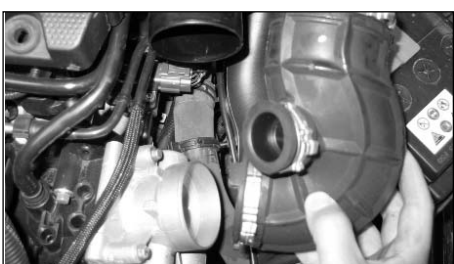
1. Turn the ignition OFF and disconnect the vehicle's negative battery terminal.



2. Remove the intake snorkel from the slam panel as shown.



3. Unclip and remove the small resonator box from the air box and intake hose as shown.



4. Unclip and remove the intake hose from between the air box and throttle body as shown.



5. Unclip and remove the intake hose from the resonator box as shown.



6. Unclip the breather assembly from the air box as shown.



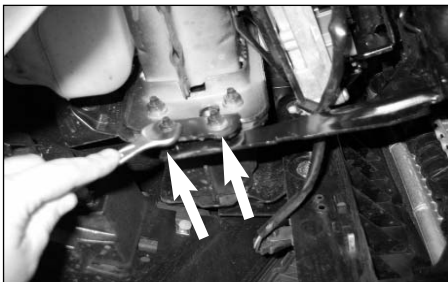
7. Carefully unclip the coolant hose from the air box intake tube as shown.



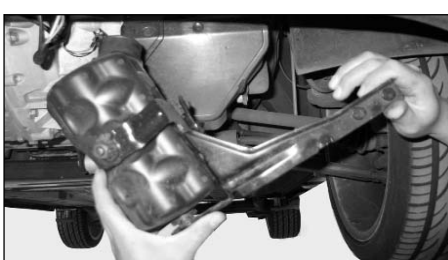
8. Unclip and remove the complete air box from the vehicle as shown.



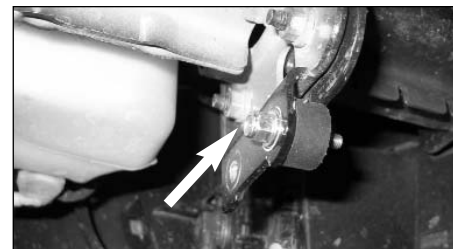
9. Remove the breather assembly from the engine as shown.



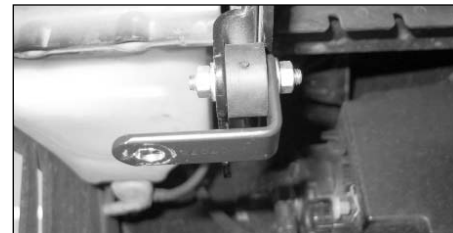
10. As per manufacturer's instructions carefully raise the front of the vehicle and support it with a pair of axle stands. Remove the two indicated nuts that secure the resonator box to the vehicle as shown.



11. Remove the resonator box from the vehicle as shown.



12. Mount the rubber stud onto the resonator box support bracket using an M6 Nylock nut & flat metal washer supplied. (Use the hole nearest to the engine.)



13. Mount the bracket onto the rubber stud using an M6 Nylock nut and flat metal washer supplied.



14. Fit the silicone sleeve onto the throttle body using a #44 hose clamp supplied.

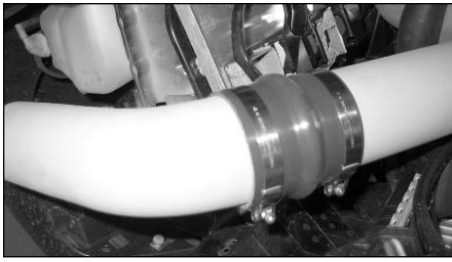


15. Fit the "A" tube into the sleeve using a #44 hose clamp. Do not fully tighten at this moment. **NOTE:** Before installing clean the inside of the 2 tubes with water and towel.



16. Fit the hump hose onto the "A" tube using a #44 hose clamp supplied.

Continued on reverse side!



17. Feed the "B" tube into the hump hose using a #44 hose clamp supplied. (Do not fully tighten at this moment.)



18. Fit the tube onto the "L" bracket using a waved washer, washer and M6 bolt supplied. (Do not fully tighten at this moment.)



19. Fit the filter onto the "B" tube using the #44 hose clamp supplied.



20. Fit the dry-charger onto the filter as shown. **NOTE:** The Drycharger's water repellent properties will last up to two years. See the parts list to re-order Drycharger if necessary.



21. Align the "A" and the "B" tubes for best fit and clearance, now tighten all hose clamps, bolts and nuts.



22. Fit the breather hose supplied onto the breather on the cam cover as shown.



23. Fit the other end of the breather hose onto the vent on the intake tube as shown. If necessary, trim the hose for best fit and clearance.



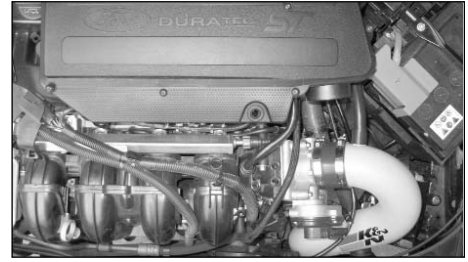
24. Secure the breather hose to the coolant hose using a cable tie supplied.



25. Secure the throttle cable to the wiring loom using a cable tie supplied.



26. Remove the intake tube from the air box as shown.



27. Re-install the air box and reconnect the negative battery terminal.

NOTE: before rebuilding the car into the stock set-up clean the inside of the air box with water and a towel.

28. Double check to make sure everything is tight and properly positioned before starting the vehicle.

29. It will be necessary for all Typhoons to be checked periodically for realignment, clearance and tightening of all connections. Failure to follow the above instructions or proper maintenance may void warranty.

ROAD TESTING:

1. Start the engine with the transmission in neutral or park, and the parking brake engaged. Listen for air leaks or odd noises. For air leaks secure hoses and connections. For odd noises, find cause and repair before proceeding. This kit will function identically to the factory system except for being louder and much more responsive.

2. Test drive the vehicle. Listen for odd noises or rattles and fix as necessary.

3. If road test is fine, you can now enjoy the added power and performance from your kit.

4. K&N suggests checking the Filtercharger element periodically for excessive dirt build-up. When the element becomes covered in dirt (or once a year), service it according to the instructions on the Recharger service kit available from your K&N dealer, part number 99-5000 or 99-5050

